

F.I.T. FORMA[®] INJECTION TECHNIQUE

The **All-in-One** package for dental wear & veneers

F.I.T. MINIMAL INVASIVE

Excellent restorative choice with Trioclear™ aligners

Our **F.I.T. solution** aligns with our **philosophy** of **minimal invasiveness** and serves as an excellent **restorative choice** when used alongside our **pre-restorative Trioclear™ aligner** system.

WHY IS MINIMAL INVASIVE SO IMPORTANT?

Our minimal invasive approach can help preserve tooth structure more effectively while maintaining the natural appearance and functionality of the teeth and providing a longer lasting result.

We support minimal invasive procedures with the lowest biological price. The focus is on removing as little healthy tooth structure as possible and instead utilizing our solutions, like the Forma® Injection Technique (F.I.T.).



THE IMPORTANCE OF A TRIOCLEAR™ TREATMENT BEFORE TOOTH RESTORATIONS

In the world of cosmetic dentistry, achieving a brilliant smile often involves multiple steps. One increasingly popular approach is the Align, Bleach, and Composite (ABC) technique. What is the ABC technique? This is a fast and cheaper solution for patients wanting to straighten and whiten their teeth. First focus on the Alignment, after this Bleach the elements until your patient has the desired tooth shade, and then finalize it with the Forma® Injection Technique (F.I.T.).

EDUCATION

Supporting practitioners with TrioClear™ aligners is incredibly important to us. If you want to become a practitioner, you will follow several steps in our no-cost training process. After attending an introductory webinar, you will gain access to our TrioClear™ e-learning modules. You will then be guided through your first three clinical cases by our TrioClear™ specialists. In addition to this guidance, once certified, if you have an extended complex case, you will have the option to book an online appointment with our own orthodontist and highly experienced TrioClear™ practitioner: Dr. Marie-Pierre Moulin-Romsee. Please visit our website: <https://trioclearaligners.eu>

WHY WORK WITH US

We offer complete guidance from start to finish. With our F.I.T. kit, you benefit from the ease of a one-stop-shop experience. As your dedicated solution provider, we provide a comprehensive package with all the essential tools and products needed for this procedure.

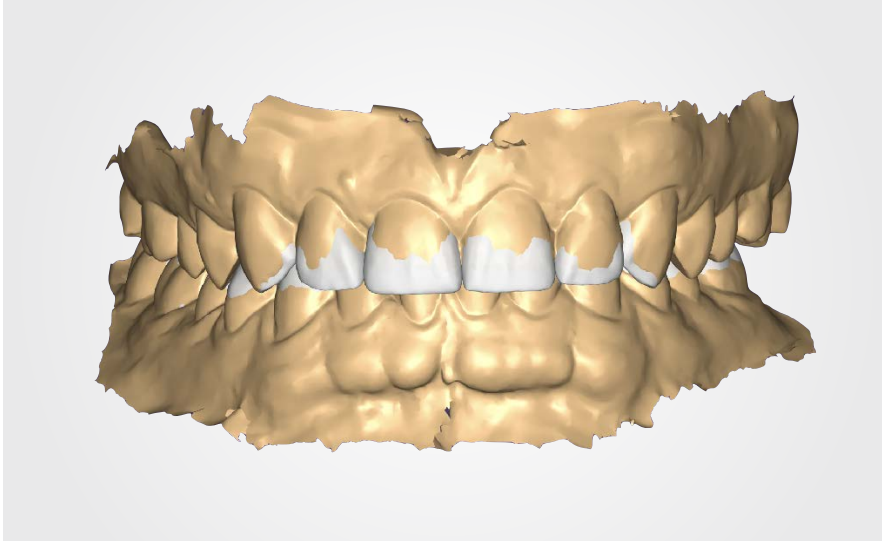
In addition, you can participate in our webinar and hands-on course to begin treatment with confidence. Thanks to a seamlessly integrated digital workflow, performing this procedure is easy to execute.

If you're still looking for an intraoral scanner, check out our extensive range of intraoral scanners, each tailored to the needs of your practice.



F.I.T. FORMA® INJECTION TECHNIQUE

A unique solution to treat patients with dental wear



The Composite Forma®-Injection Technique (F.I.T.) is a unique solution to treat tooth surface loss in a quick, easy, predictable and efficient way. In this no-prep technique, a direct flowable micro-filled resin hybrid composite is used to achieve a perfect, total rehabilitation.

The composition of direct composite materials has recently undergone a spectacular development, resulting in an optimisation of both aesthetic and physical properties. Nowadays, direct composites are being ordered as a flowable, injectable consistency which, thanks to nanotechnology, equals the physical properties of paste-composites. These injectable composites are wear-resistant, possess an adequate viscosity, with little shrinkage, and proper gloss retention. In other words: these composites can be used as a long term or final restoration.



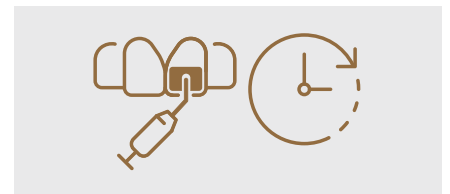
MINIMAL INVASIVE:

Our minimally invasive approach aims to preserve tooth structure effectively, maintaining natural appearance and function for long-lasting results. We prioritize minimal intervention, utilizing digital solutions such as Forma® Injection Technique (F.I.T.) to minimize the removal of healthy tooth structure.



ALL-IN-ON PACKAGE:

With our F.I.T. kit, you enjoy the convenience of a one-stop-shop experience, as we offer a comprehensive package containing all the essential tools and products needed for this procedure as your dedicated solution provider.



SIMPLE & FAST:

Because no preparation is required, treatment is fast. The digital workflow streamlines the process, making it an incredibly simple restoration.

F.I.T. THE DIGITAL WORKFLOW

How do you treat patients with tooth wear?

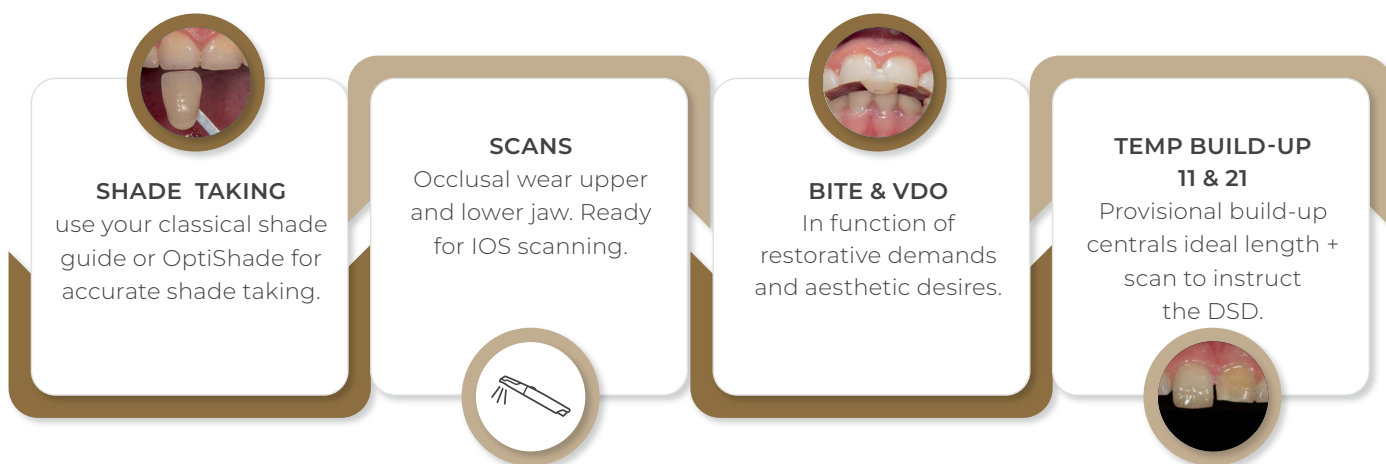
Treatment options on offer currently come with indirect solutions and a wide selection of available materials. This scenario demands tooth preparation and is not always feasible for every patient.

At Elysee Dental, we aspire to provide solutions and now present an alternative treatment option: the Composite Forma® Injection Technique, or F.I.T.

The main advantage of this technique is that restorations are first designed using the Elysee View diagnostic tool and then copied and transferred in detail to the natural teeth. For complex morphologies, challenging aesthetic cases or cases requiring reestablishment of the occlusal vertical dimension, a predictable result can be obtained and chair time reduced with this relatively simple procedure.

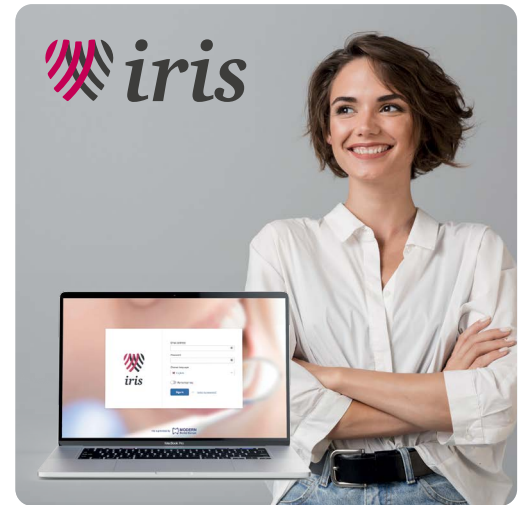
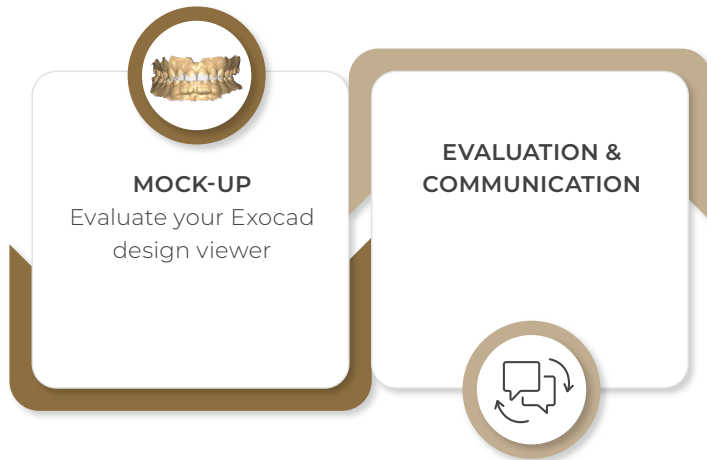
F.I.T. THE DIGITAL WORKFLOW

Phase 1



F.I.T. THE DIGITAL WORKFLOW

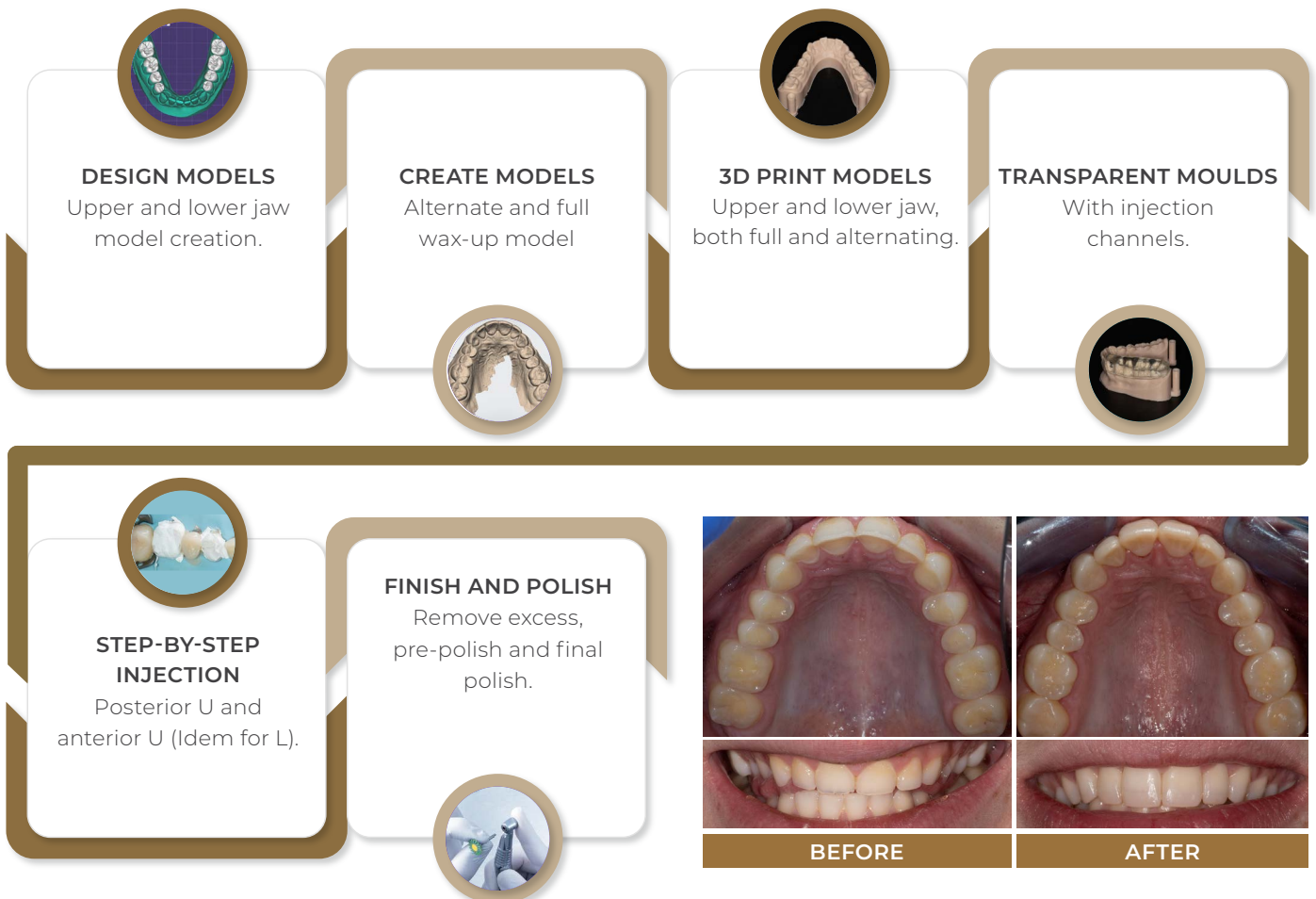
Phase 2 (Optional)



F.I.T. THE DIGITAL WORKFLOW

Phase 3

INJECTION AND POLISHING The injection phase is a step-by-step procedure. Afterwards, the restoration is polymerised, finished, and polished to ensure gloss retention over time.



INTRODUCING F.I.T. VENEERS

Streamlined veneer solution with layered injection

Introducing FIT VENEER, the newest addition to our successful Forma Injection Technique (FIT) family. Building on the proven success of FIT WEAR, FIT VENEER offers a revolutionary solution for veneer applications with its **innovative layered injection technique**. This advanced method simplifies the process, making it faster, easier, and more cost-effective while delivering natural, beautiful results. Perfectly suited to the growing demand for aesthetic dentistry, FIT VENEER **mimics the natural tooth structure with precision**.

Join us for our **upcoming webinars** and **hands-on courses** to master this revolutionary technique.

WHAT IS FIT VENEER?

FIT VENEER is designed as a direct veneer solution that is easy, quick, cost-effective and efficient, making it a one-stop-shop for dental veneer applications. The new concept allows for injections in different layers, closely mimicking the natural build-up of teeth.



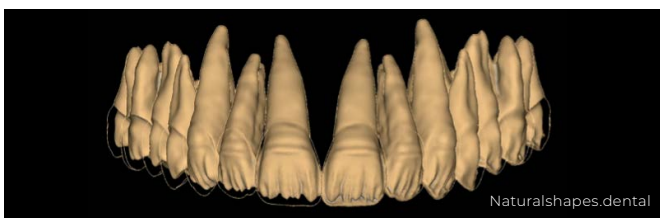
WHY FIT VENEER?

Traditional indirect veneer techniques can be challenging due to intricate preparation and cementation processes. With the growing demand for aesthetic dentistry, we have developed FIT VENEER to simplify veneer applications. This innovative concept utilizes injection of direct composite in different layers, creating a new standard in veneer solutions that is both efficient and cost-effective.

KEY BENEFITS OF FIT VENEER INCLUDE:

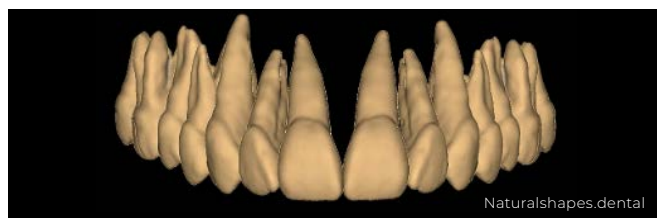
- Simplified Technique: Reduces the complexity of prep and cementation.
- Expanding Market: Addresses the increasing demand for aesthetic and cosmetic dental solutions.
- Unique Layer Injection options: Ensures superior aesthetic outcomes with a natural analogue build-up structure.

LAYER INJECTION CONCEPT AND PROCESS:



1. First Injection: Dentine core and mamelons, creating more volume cervically and less towards the incisal mamelons.

Dentine Key: Utilize the cut-back design from our high aesthetic Exocad library for the dentine layer.



2. Second Injection: Enamel according to the patient's age, covering the entire vestibular surface with varying thicknesses to reflect natural tooth structure.

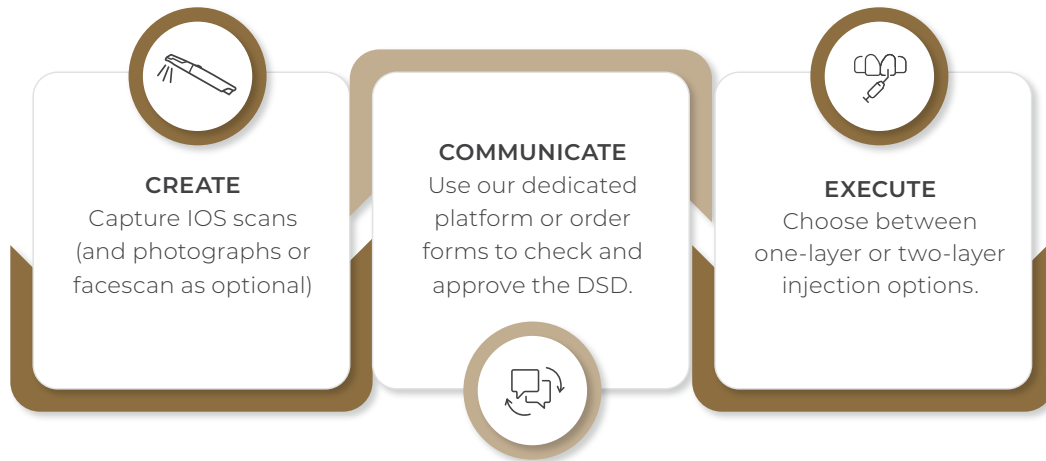
Enamel Key: Apply the alternate enamel key and secondly the full wax-up enamel key for the final enamel layer.

This layered approach ensures that the teeth are not in contact during the dentine injection, with separation achieved using a disc. Only the enamel keys are alternated, as the contact zones are composed of enamel.



HOW DOES FIT VENEER WORK?

FIT VENEER is designed to be used with minimal or no tooth preparation, ensuring quick and predictable results. The FIT VENEER package includes everything needed for a successful application, featuring the high-performance Composite GC Gaenial Injectable, known for its excellent mechanical properties and aesthetic appeal.



LEARN MORE

To help you master the new FIT VENEER concept and workflow, we are offering **NEW webinars and hands-on courses**. These sessions will cover the two-layer injection technique in detail, demonstrating how to replicate the natural tooth structure with dentine and enamel layers for superior aesthetic results in the anterior zone.

Join us in revolutionizing dental veneer applications with FIT VENEER. For more information and to register for our upcoming webinars and courses, please visit our website or contact your local representative.

