



QUICK START GUIDE

1 **STERILIZE THE RETRACTORS**

Before each use, the instruments must be sterilized following the instructions given in use and maintenance manual.



2 **MAKE A CAREFUL EXAMINATION OF THE PATIENT'S MOUTH**

Before using the retractors, it is necessary to inspect the patient's oral cavity: make sure that there are no mucosal lesions; remove any removable prosthesis, other removable appliances, or any other device or obstacle present in the patient's mouth.

3 **IDENTIFY THE APPROPRIATE RETRACTOR FOR THE ARCH YOU ARE GOING TO SCAN**

Each LO RUSSO RETRACTORS kit has three instruments: two for the mandibular arch (one for the right side and one for the left side), and one for the maxillary arch.



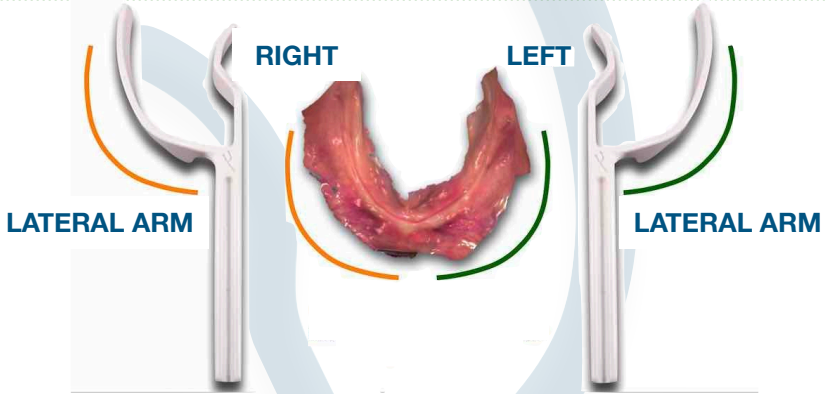
3 RETRACTORS / KIT

KITS OF
3 SIZES



4 FOR THE MANDIBULAR ARCH, YOU NEED TWO RETRACTORS: RIGHT, AND LEFT SIDE.

The distinction of left and right retractor is very simple and intuitive, just let yourself be guided by the analogy between the shape of the lateral arm of retractors for the lower arch and the shape of the arch.

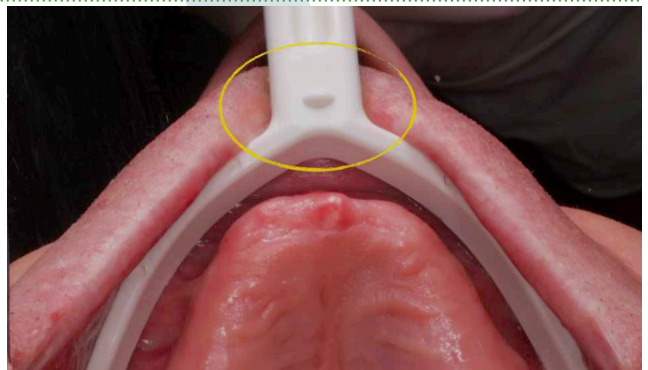


Remember: keep always the logo engraved on the handle of the retractor facing you.

5 CAREFULLY SELECT THE SIZE OF THE RETRACTORS.

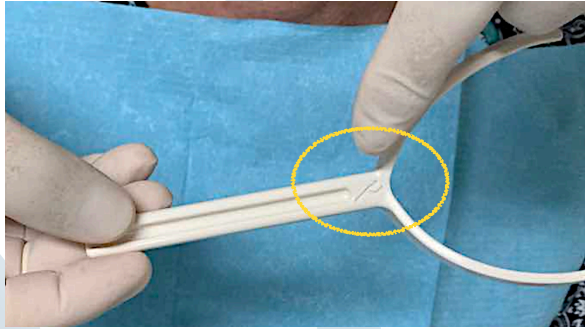
On the retractors' handle, on the side opposite the logo, there are small raised indications (visible and appreciable to the touch) which identify the size of the instrument.

No indication:
size 0;
one indication:
size 1;
two indications:
size 2).



6 HOLD THE RETRACTOR BY THE HANDLE AND ORIENT IT CORRECTLY

To ensure correct orientation of the instruments, the logo engraved on the handle must be facing the operator.



7 INSERT THE RETRACTOR INTO THE PATIENT'S MOUTH

Attention should be paid while inserting the instrument into the patient's mouth. This is carried out by performing a small rotation movement of instrument's arms, similar to the movement made to insert an impression tray.



Have a look at these videos as a guidance

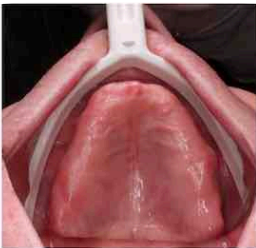


Maxilla

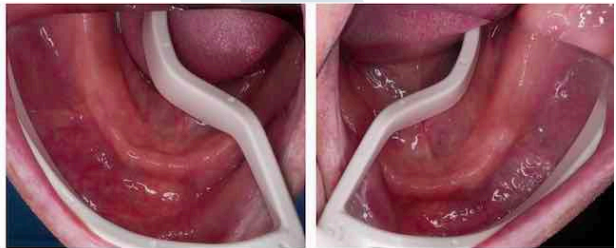
Mandible

8 PLACE THE INSTRUMENT IN ITS POSITION OF USE

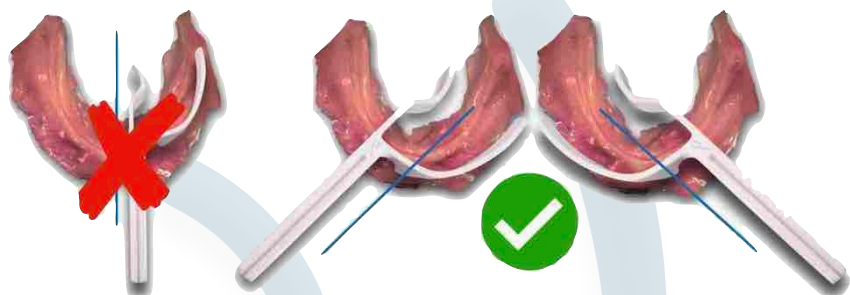
Maxillary arch



Mandibular arch



For the lower arch, the instruments must NOT be oriented parallel to the sagittal plane, but according to what is shown in the following image.



9 CAPTURE YOUR OUTSTANDING SCAN

Now, a clear scanning strategy in your mind is mandatory. A nice reference, as a guidance, can be found in the following link.



10 REMOVE THE INSTRUMENT FROM THE PATIENT'S MOUTH

After using the instrument, it must be removed with caution, with a movement opposite to that of insertion.

11 START THE CLEANING AND STERILIZATION PROCEDURE FOR THE USED INSTRUMENTS.

Correct cleaning and sterilization of instruments, before and after each use, is a fundamental prerequisite for protecting the health of patients and staff. Always refer to the instructions given in use manual, the specific operating procedures for the healthcare facility, and requirements by local legislation.

Follow us on:



www

