



ELETRA



SMART



# SIMPLIFY SCANNING

EXPLORE   ELEVATE   EVOLVE

# ELETRA SMART

## Superior Scan Performance

The ELETRA intraoral scanner encompasses all the essentials for modern dentistry. **Precision, speed, and comfort** mark just the initiation of a range of qualities that render it a crucial selection for both professionals and patients.

Wait no more; she's ready to greet you! Uncover the advantages of ELETRA today.

**Streamlined and Effective:** Detect undercuts, verify preparation space, perform occlusion checks, conduct preoperative scanning, enable direct 3D model printing, scan impressions, and much more...

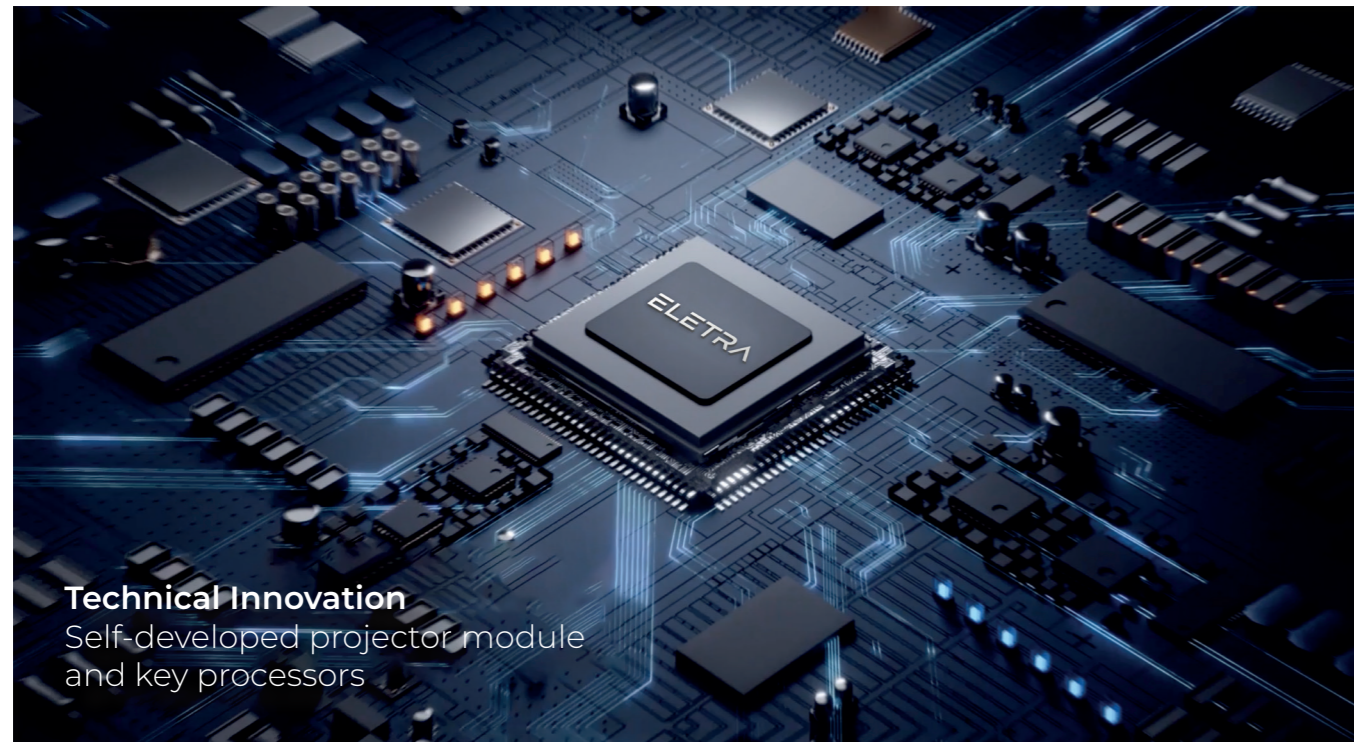
The **calibration process** is entirely **automatic**. It occurs seamlessly without your intervention, taking just a few minutes, all thanks to an automated box connected to the USB port of your computer.

**Take a moment to breathe!**

## SMART: SIMPLIFY SCANNING

Innovation in Technology: **In-house development of AI, projector, and specific processors.**

"Infused with innovations, **ELETRA** harnesses the **latest technological advancements**. With a proprietary projector module and dedicated processors emitting light coding, it **excels at scanning** even featureless surfaces like gums. The inclusion of **material recognition** enhances the scanning of metal, resins, and soft tissue."



### Technical Innovation

Self-developed projector module and key processors

*We use our self-developed chips, which greatly guarantees our production capacity.*

*We also used our self-developed projection module, which greatly improves the data quality of our scanner.*

# INTRODUCING A REMARKABLE FEATURE:



Our **"coded structured light"** has the remarkable capability to capture 3D data with just 1 or 2 images! In contrast, many other scanners rely on "sequential structured light," necessitating 5 to 10 images (or more) to generate complete 3D data.

The frame rate, representing the number of images you can scan in one second, offers three distinct options tailored to your needs: normal (15 images, suitable for beginners), high (18 images, ideal for regular users), and ultra (24 images, designed for experienced users). It's important to note that the normal option strategically limits the number of images captured, optimizing the volume of final data.

Our cutting-edge technology, utilizing 24 FPS (images per second) on the ELETRA, is at least on par with the **120 FPS** of other scanners. This stands out as a key reason why our scanner outpaces competitors that boast higher FPS.

**"Dear dentist, we understand the critical nature of your work and the need for precision in every scan you perform. Let's explore why choosing an intraoral scanner with encoded structured light can significantly elevate your practice."**

**1. Precision in Detail:** "coded structured light goes beyond traditional methods by assigning a unique code to each point of the scanned surface. This results in unparalleled precision, capturing even the most intricate details of teeth and oral structures. For dental work that demands accuracy, this technology ensures you don't miss a single detail."

**3. Time Efficiency in Complex Cases:** "While structured light is quick for basic shapes, coded structured light maintains this speed while excelling in capturing complexity. For comprehensive cases that require detailed scans, this technology ensures efficiency without compromising on the quality of the results. It streamlines your workflow, saving you time without sacrificing precision."

**2. Enhanced Accuracy on Challenging Surfaces:** "Imagine dealing with reflective or shiny surfaces, often a challenge in dental scans. Coded structured light minimizes errors caused by reflections. Its advanced coding system allows the scanner to differentiate between direct and reflected light, providing accurate scans even on challenging materials like metals or glossy surfaces."

**4. Future-Ready Technology:** "As the dental field continues to embrace digital advancements, investing in coded structured light ensures your practice stays at the forefront of technology. The ability to adapt to evolving industry standards and the growing demand for high-precision scans positions your practice as a leader in modern dental care."

**Conclusion:** "In summary, choosing an intraoral scanner with encoded structured light isn't just an investment in technology; it's an investment in the accuracy, efficiency, and future-readiness of your dental practice. We believe this technology will not only meet but exceed your expectations, providing you with the tools necessary to deliver the best possible care to your patients."



# HIGHLIGHTS



**Sleek and Light**  
Just 138g in weight and only 221 x 27 x 25 mm in size.



**Fast and Precise**  
Experience the 1-min ultra-fast scan and 7µm ultra-high accuracy.



**Plug and Play**  
No power adapter needed.



**Slim Tip**  
Designed slim with 50-100 autoclaving cycles.



**Quiet Cooling**  
Provide a relaxing and stress-free experience.



**Motion Sensor**  
Synchronize the movements of the 3D image on screen with its motion sensor.



**One Button Operation**  
Control by clicking or pressing various actions purely with a single button.



**Anti-fogging Technology**  
Lens fogging prevention with its innovative instant heating technology.

# ONE BUTTON OPERATION



# ONE BUTTON OPERATION



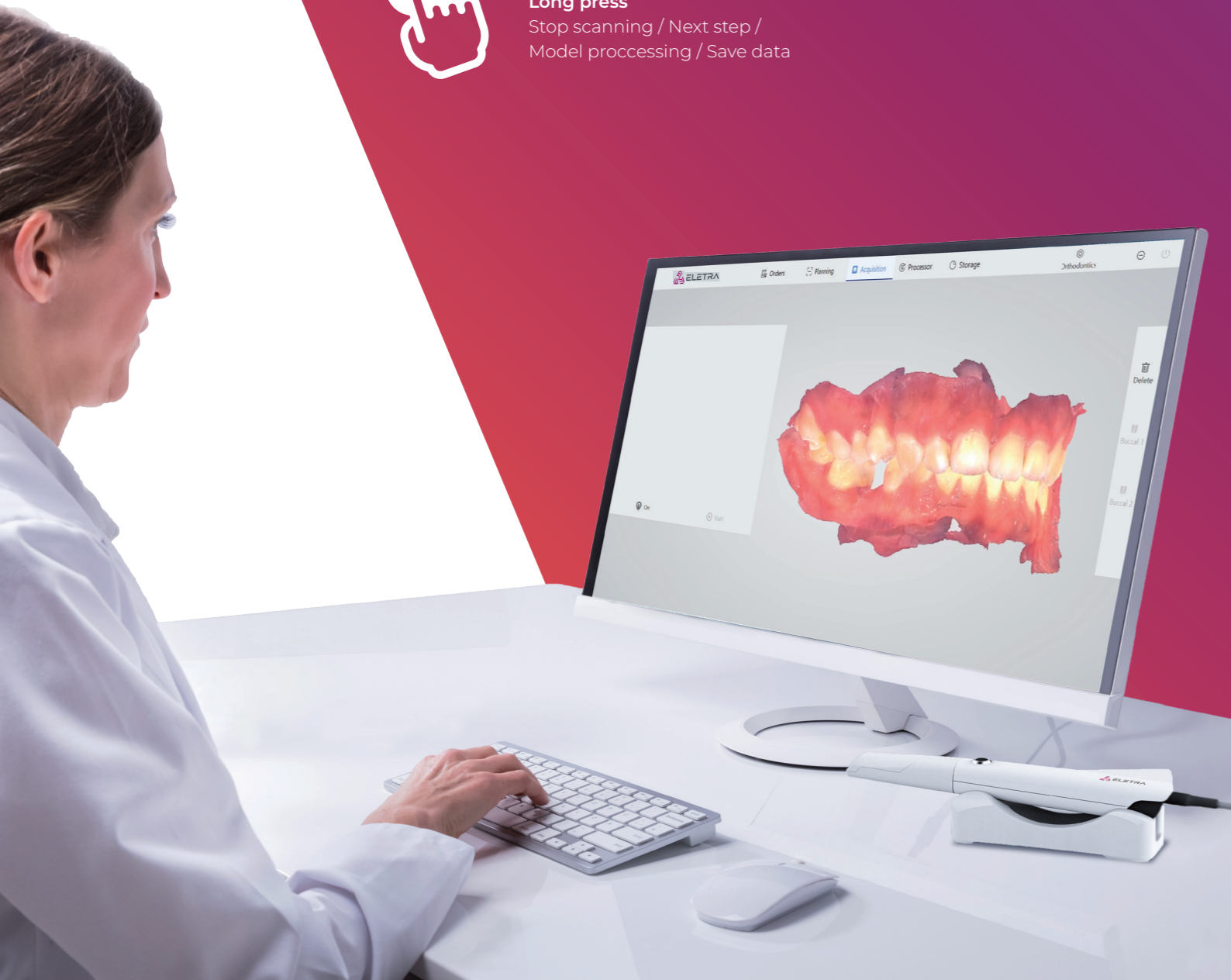
**Single-click**  
Start / Pause scanning



**Double-click**  
Change color / Bite Point

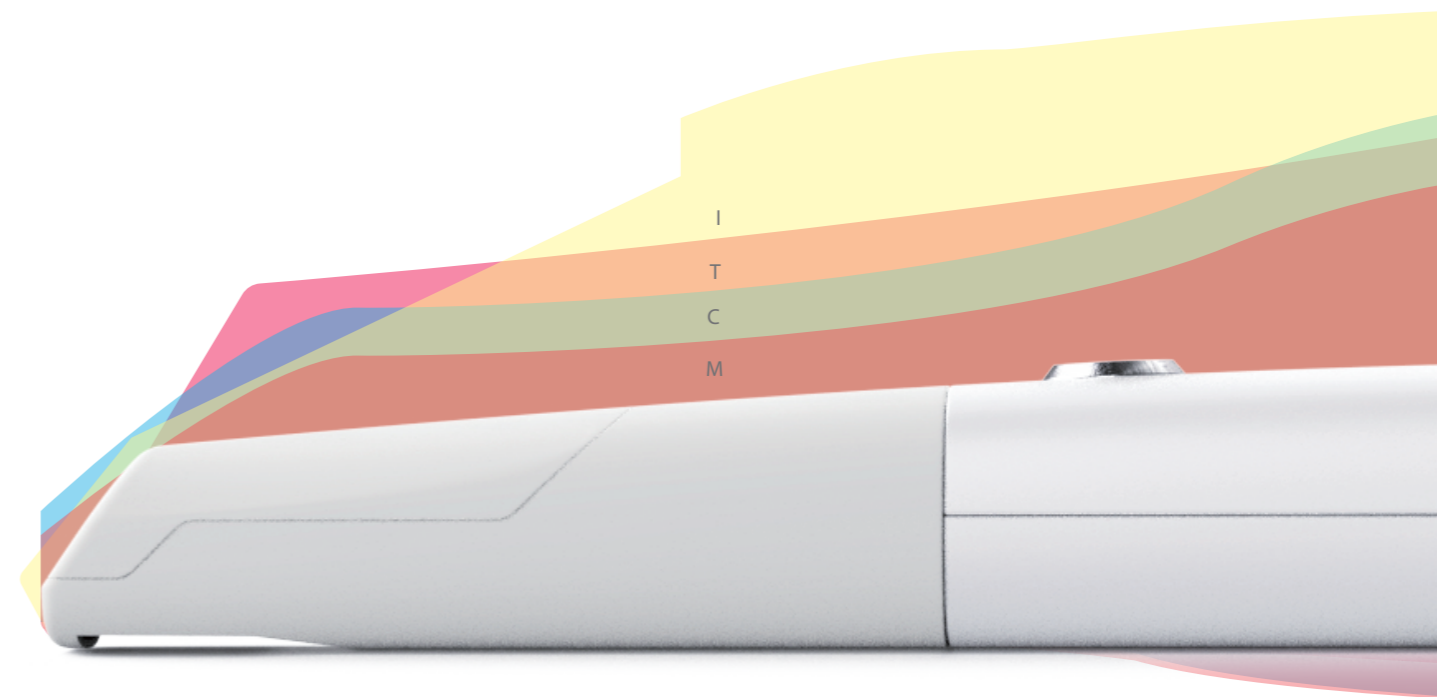


**Long press**  
Stop scanning / Next step /  
Model processing / Save data

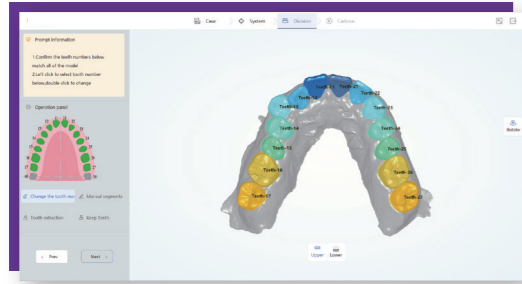


# SIZE COMPARISON

	SCANNER DIMENSION (LXWXH)	TIP (H)
<b>ELETRA SMART</b>	221 x 27 x 25 mm	14 mm
Brand I	338.5 x 53.5 x 69.8 mm	17.6 mm
Brand T	266 x 38 x 37 mm	19.5 mm
Brand C	253 x 58.8 x 50.9 mm	20.7 mm
Brand M	248 x 44 x 47.4 mm	15.9 mm

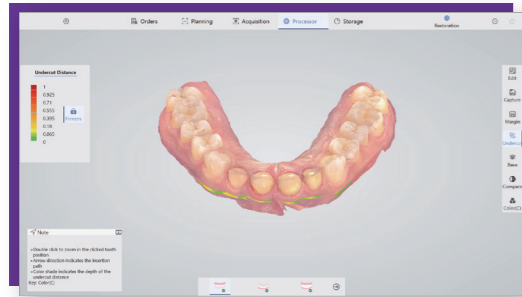


# SOFTWARE FEATURES



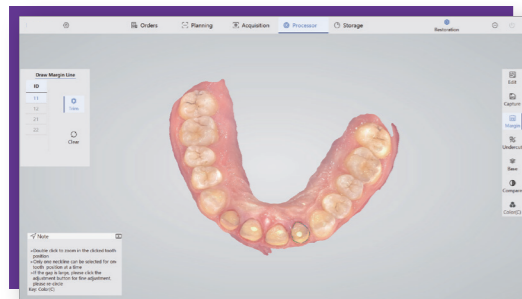
## Orthodontic Simulation

Generate AI-based simulations to facilitate communication between doctors and patients.



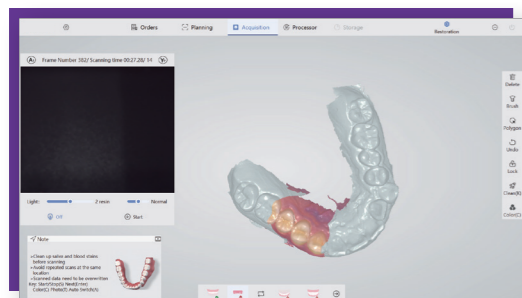
## Undercut

Allow you to analyze the undercut area based on insertion direction.



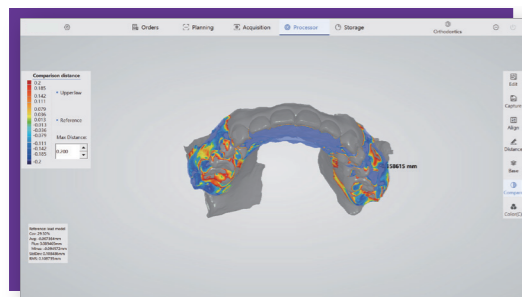
## Margin

Create a margin line and edit it into accurate positions around the preparation.



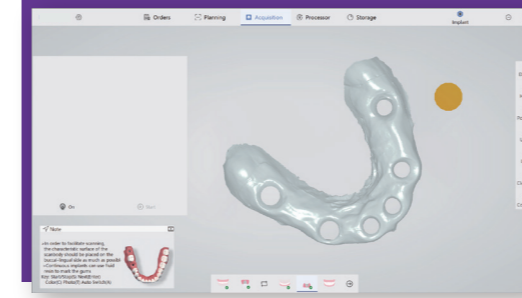
## Pre-preparation Scan

Add a pre-preparation scan to an order if you want to pass on more information to the lab.



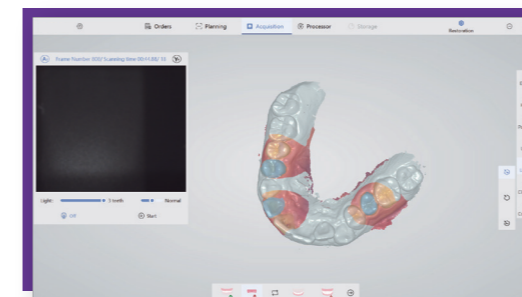
## Treatment Monitoring

Compare model differences throughout the orthodontic treatment for diagnostic analysis.



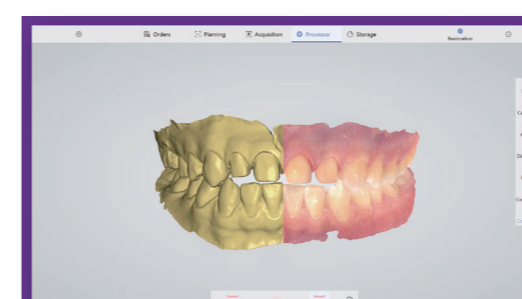
## Cuff Tool

Clear cuff data avoids tissue interference and enables automatic locking, significantly improving data reliability.



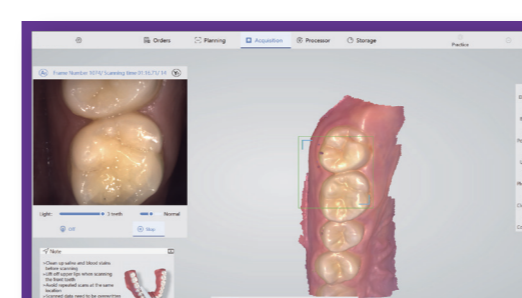
## Lock Area

Select an area to lock before performing additional scans. Original scan data of the selected area can be used for the final output.



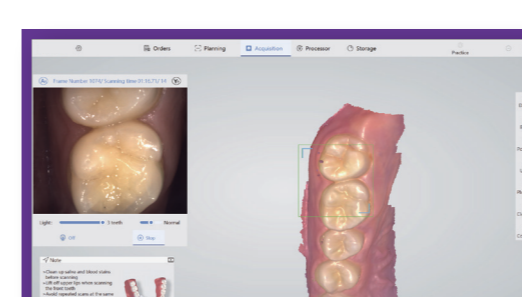
## Color Switch

Switch colors with a single-click. Display true color of the jaws to restore clear details.



## AI Scan

Easily identify soft and hard tissues, eliminate redundant data, and create accurate dental models.



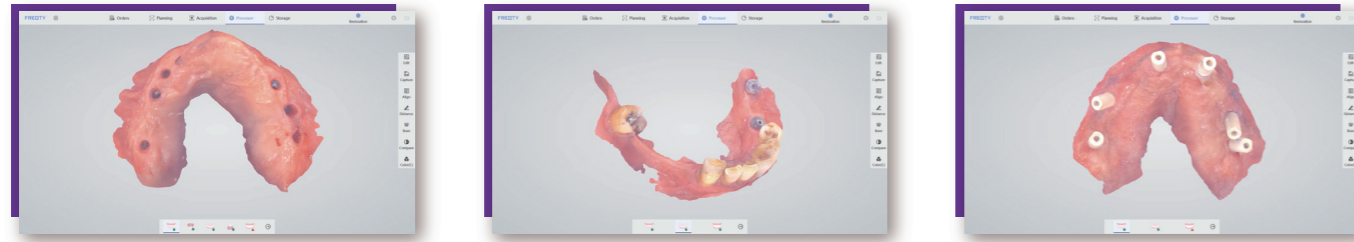
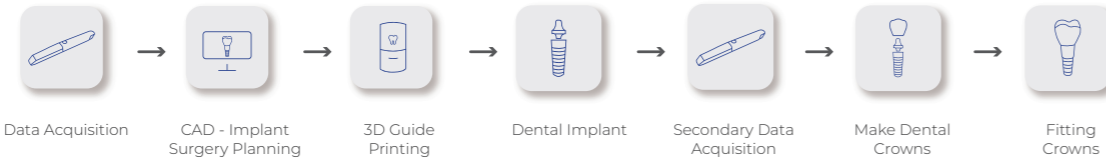
## Occlusal Distance

Automatic occlusion analysis with a color heat map to indicate occlusal interferences between the upper and lower jaw, allowing for accurate judgment of restoration distance and assisting in improving the effect of tooth preparation.

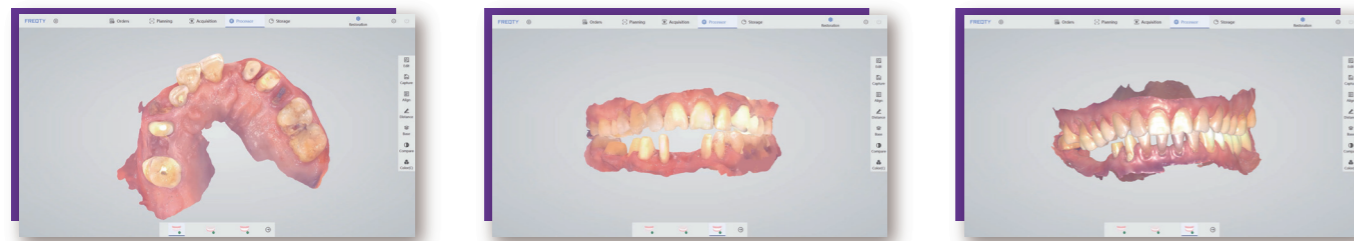
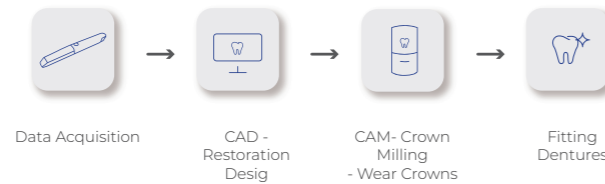


# APPLICATIONS

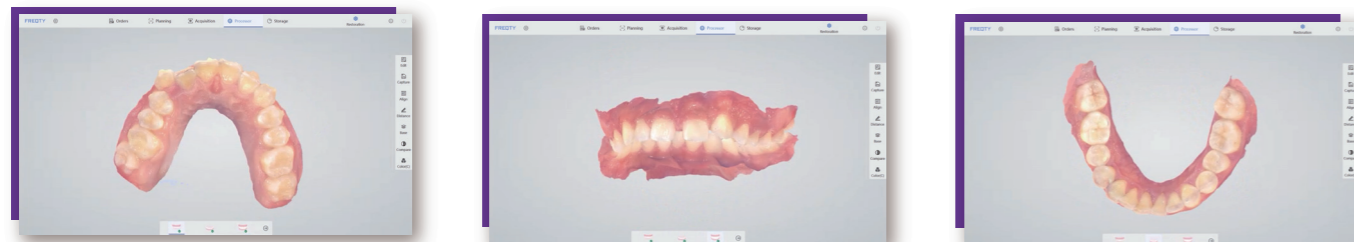
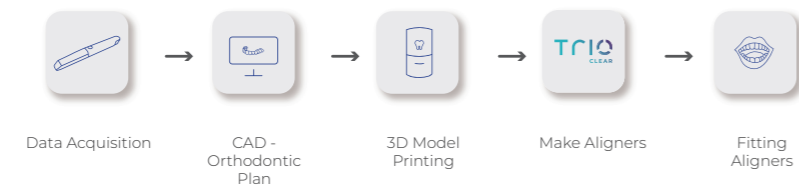
## IMPLANTS



## RESTORATIONS



## ORTHODONTICS





# SPECIFICATIONS

CATEGORY	ELETRA SMART
Anti-Fogging System	Instant Heating Technology
Accuracy	≤7μm
Precision	≤5μm
Scanner Weight	138g (192g with cable)
Scanner Dimension	221x27x25mm
Scanner Enclosure	High-strength Aviation Aluminum Alloy
Scan Field	18x16mm
Scan Depth	0-20mm
True Color	Full HD
Tips	x6 (Autoclavable)
Tip Autoclave Cycle	50-100 Times
Data Interface	USB3.0
Cable Length (m)	1.85m

# SOFTWARE

CATEGORY	ELETRA SMART
Types of Scanning	Orthodontics, Implants, Restorations
Image Capture	Yes
3D Data Preview	Yes
Output Files	STL, PLY, PTY (encrypted for user)
Cloud Service	Yes
Cloud Service Price	5GB/free
Direct Compatibility with Dental CAD	Exocad*
Main Image Processing Tools	Trim/Edit/Recover/Lock, etc.
Margin Line Drawing	Yes
Occlusal Match	Yes
Undercut	Yes
Data Comparison	Yes
AI Technology	Auto Tissue Remove, Overlap Correct, etc.
Software License	Free
Software Upgrade	Free
Transfer Data with API	Available

# PC REQUIREMENTS

CATEGORY	ELETRA SMART
CPU	Intel i7-12700H/Intel i7-11800H or above
RAM	16G/32G
Hard Disk	SSD 512G or above
GPU	RTX2060/RTX3060 or above
Operating System	Windows10/11 64bit
Display	Resolution 1920x1080 and above



